



# 107.48 Acres ± Montgomery County, IA

**\$936,080**

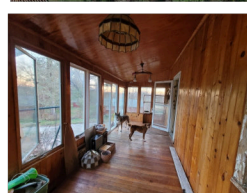
**107.48 Acres w/Home & Bldgs.**

**📍 2014 Old Hwy. 71 Villisca, IA**

*Farm is located approximately 1.5 Miles north of US Hwy. 34*

**Taxes: \$1190    Tillable: 15.07**

*107.48 Acres m/l located along Hwy. 71 and just North of Hwy 34. East Tract features 2 BD, 1 BA home with pine finish, a 40x80 shed, 2 additional machine sheds, 3 ponds, mature hardwood trees & 7.85 Crop Acres. West Nodaway River Frontage & 3.97 Acres CRP/ 7.22 Crop Acres. Outstanding deer, turkey, and mushroom hunting, making this an ideal recreational opportunity!*



**Ed Spencer, Broker 402.510.3276**

Spencer Groups / Ed Spencer Real Estate

322 E 7th St. Logan, IA 51546 | 712.644.2151 office

**www.spencergroups.com**

