

500.25 ACRES + FEEDLOT W/HOME

TRACTS 6, 10, AND 11 - POTTAWATTAMIE COUNTY, IA

\$9,250/ ACRE



TRACT 6

230.36 ACRES M/L

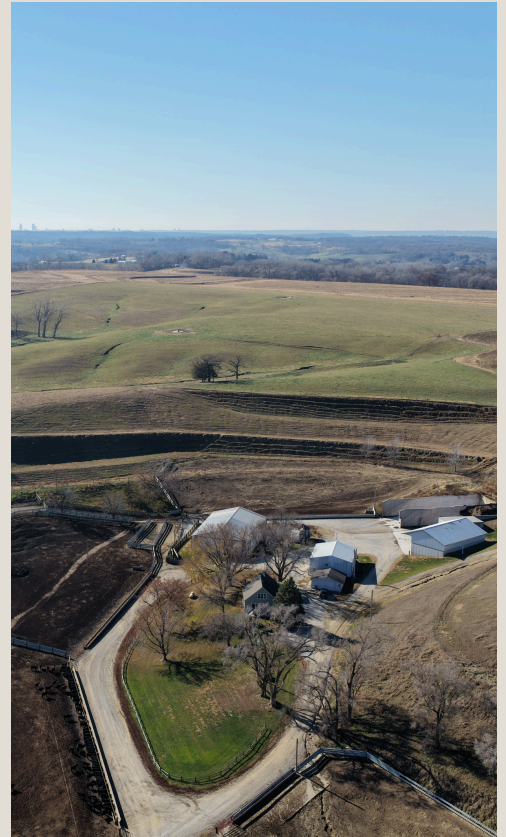
TAXES: \$6,985



TRACT 10

111.89 ACRES M/L

TAXES: \$2,710



TRACT 11 - FEEDLOT

158 ACRES M/L

TAXES: \$7,166

TRACTS 6,10,11 ADJOIN: IF PURCHASED TOGETHER THEY WILL MAKE AN OUTSTANDING 500.25 ACRE PACKAGE WITH THE FEEDLOT PASTURE AND APPROXIMATELY 190 TILLABLE ACRES FOR SILAGE AND CATTLE FEED. CALL FOR APPOINTMENT TO VIEW

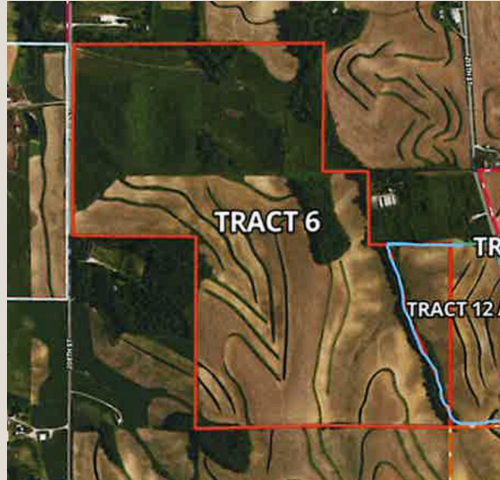
ED SPENCER, BROKER 402.510.3276
322 E. 7TH ST. LOGAN, IA 51546



EDSPENCER
REAL ESTATE

FOR MORE INFORMATION VISIT:
WWW.SPENCERGROUPO.COM

TRACT 6 \$9,250/ ACRE
230.36 ACRES M/L
POTTAWATTAMIE COUNTY, IA



DIRECTIONS TO THE FARM:

From Underwood Iowa, West on Mahogany Road (G30) to Road L34. North on Road L34 to Pinoak Road. West on Pinoak Road 3 miles, then south on 208th Street 1 mile. Farm is on the East side of road and bordered by Tract 12 on the East and the Feedlot on the West.

BRIEF LEGAL:

The NE 1/4 SE 1/4; the N 1/2 SE 1/4 SE 1/4 Section 9, the W 1/2 SW 1/4 and that part SE 1/4 SW 1/4 east of ditch Section 10; the NW 1/4 NW 1/4 and that part of NE 1/4 NW 1/4 east of ditch Section 15, Township 76, Range 43, Pottawattamie County, Iowa. Tax Parcels: 764315100005; 764309400003; 764309400004; 764310300001; 764310300003; 764315100001

FSA INFO:

142 acres m/l Cropland, balance in pasture and trees

Farm# 4599 Tract 4377 Farm# 3626 Tract 1919 Farm# 2910 Tract 2811

Farm# 4374 Tract 4187 Farm# 6319 Tract 4713

TAXES: Estimated \$6,985 after surveys **CSR2:** 54.4 overall CSR2

NOTE: There are maintenance contracts with NRCS on this farm. Contact office for contract copies. Bordered by 208th St. on West side. Adjacent to Feedlot (Tract 11). Eastern boundary on property borders Tract 12. The Easterly 12.72 acres of this tract is being added to Tract 12A on the East. Western part of property is grass pasture. Farm would make an excellent companion of Feedlot (Tract 11). Northern part of property is approx. 70 acres of grass.

CONTACT US



Ed Spencer, Broker

402.510.3276

322 E. 7th St. Logan, IA 51546

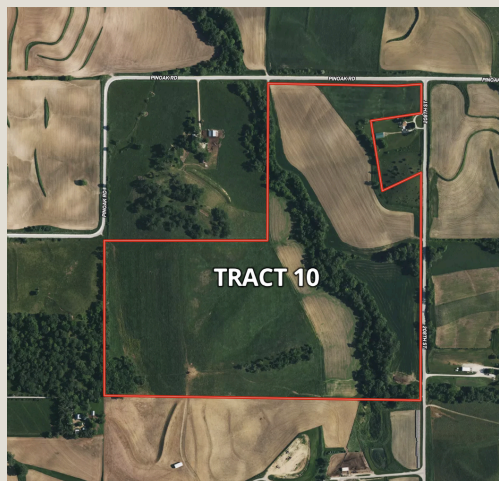
www.spencergroups.com



TRACT 10

\$9,250/ ACRE

111.89 ACRES M/L
POTTAWATTAMIE COUNTY, IA



DIRECTIONS TO THE FARM:

From Underwood Iowa, West on Mahogany Road (G30) to Road L34. North on Road L34 to Pinoak Road. West on Pinoak Road 3 1/2 miles. Farm begins on the west side of the intersection of Pinoak and 208 Street. Farm has approx. 1/2 mile of frontage on 208.

BRIEF LEGAL:

Hazel Dell Township Sections 9 the SE NW, the SW NE and part NW NE, Pottawattamie County, Iowa.

Tax Parcel #: 764309200001; 764309100006; 764309200004

FSA INFO: Farm #: 4023 Tract #: 669

TAXES: \$2,710 **CSR2:** 45 overall per surety Maps

NOTE: There are maintenance contracts with NRCS on this farm. Contact office for contract copies. This farm is currently in pasture and has a southern border that adjoins the northern border of the Feedlot (Tract 11). This farm offers excellent pastureland with adequate shade and running water. Farm has frontage on Pinoak Road. Can accommodate 3 and up to 5 houses on this Tract depending on access. Ask agent for details.

CONTACT US

EDSPENCER
REAL ESTATE

Ed Spencer, Broker

402.510.3276

322 E. 7th St. Logan, IA 51546

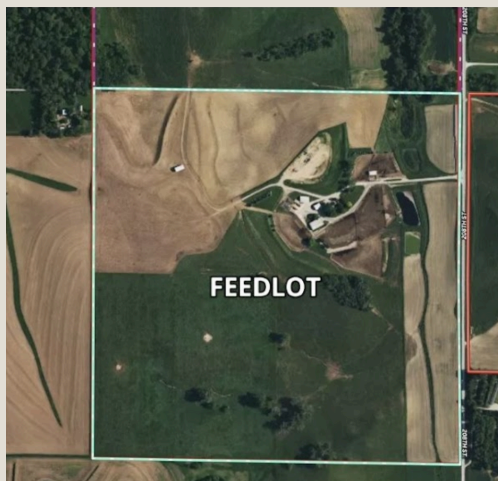
www.spencergroups.com



TRACT 11 - FEEDLOT \$9,250/ ACRE

158 ACRES M/L

POTTAWATTAMIE COUNTY, IA



DIRECTIONS TO THE FARM:



From Underwood Iowa, West on Mahogany Road (G30) to Road L34. North on Road L34 to Pinoak Road. West on Pinoak Road 3 1/2 miles, then South on 208 Street 1/2 mile. Feedlot starts 1/4 south of Pinoak Road. Note: Feedlot is bordered by Tract 10 on the North and Tract 6 on the East.

BRIEF LEGAL:

Hazel Dell Township Section 9 the E 1/2 SW 1/4 and the W 1/2 SE 1/4 Pottawattamie County, Iowa. Tax Parcel #: 764309300003; 764309400001; 764309300005; 764309400002

FSA CROPLAND: 133.41 (non-tillable) **TAXES:** \$7,166 **FSA INFO:** Farm #'s: 3626 & 6323 Tract #'s: 1917 & 2812

PROPERTY DETAILS:

				
2bd, 1ba, 1,207 sq ft home	790 sq ft Garage	4,7700 sq ft Building	1,600 sq ft Pole Building	2 Cemented Silos

NOTE: 550 open feedlot capacity. Other improvements include feed bunks, cattle working facilities Located on the North 80 acres of the property are the feedlot facilities. The remaining 80 acres borders the Feedlot acres on the South. Southerly 80 acres is pasture with approximately 11.64 acres of grow cropland adjoins 208th St. on East side. East portion of the Feedlot adjoins waste lagoon.

CONTACT US

EDSPENCER
REAL ESTATE

Ed Spencer, Broker
402.510.3276
322 E. 7th St. Logan, IA 51546
www.spencergroups.com

