

HARRISON COUNTY, IOWA

LITTLE ADAMS RANCH, LLC

# LAND AUCTION




273.21 ACRES M/L

THURSDAY  
DEC

21  
11:00AM

UNION TOWNSHIP

 Auction held at The Twisted Tail Steakhouse, 2849 335th St, Beebeetown

**DIRECTIONS TO THE FARM:** From Beebeetown, Iowa - East on 335th 3 miles to the Northwest Edge of Tract 1. Signs posted on each tract.

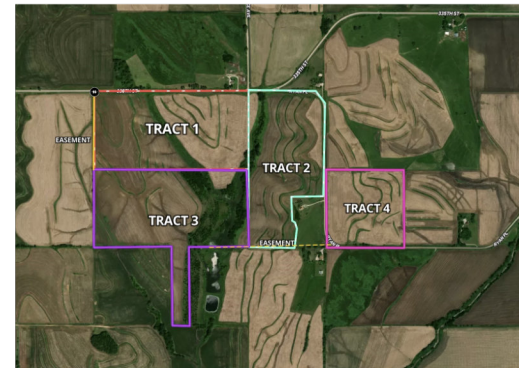
**PROPERTIES WILL BE SOLD BY BUYERS CHOICE METHOD:**

**TRACT 1** - 80 acres m/l - 74.55 tillable/59 CSR2

**TRACT 2** - 66.34 acres m/l - 53.75 tillable/55.3 CSR2

**TRACT 3** - 89.25 acres m/l - 56.55 tillable/46.5 CSR2

**TRACT 4** - 37.62 acres m/l - 36.53 tillable/53.9 CSR2



**WWW.SPENCERGROUPS.COM**

**Ed Spencer, Auctioneer 402-510-3276**  
Spencer Groups | 322 E 7th St, Logan, IA 51546



**Spencer Auction Group**

322 E 7TH ST  
LOGAN, IA 51546